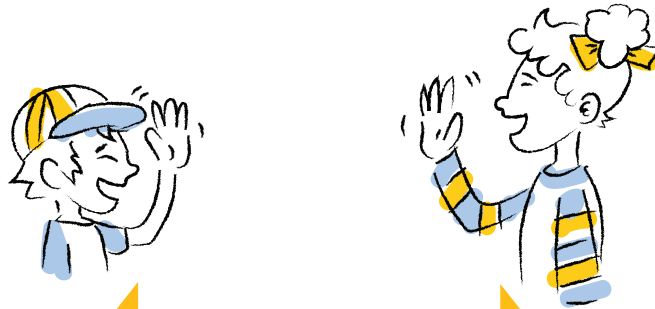


You might be outside but

GERMS LOVE TO TRAVEL

PRACTICE SOCIAL DISTANCING



**GIVE OTHERS
SPACE ON PATHS
AND TRAILS**



**A V O I D
PEAK HOURS
IN PARKS AND TRAILS**



**STEER CLEAR OF
SHELTERS, BENCHES AND
P L A Y A R E A S**

STAY HEALTHY

For more information about COVID-19 visit coronavirus.iowa.gov or cdc.gov/coronavirus/2019/nCoV